

Who are we?



EUROPEAN
INFRASTRUCTURE FOR
TRANSLATIONAL MEDICINE



To accelerate the translation of research discoveries into patient benefit.

We **support, using our capacities and expertise,** academia, industry, patients and policy makers.

Facilities, resources and services to support translational research



EATRIS countries

Bulgaria, Croatia, Czech Republic, Finland, France, Italy, Latvia, Luxembourg, Netherlands, Norway, Portugal, Slovenia, Spain, Sweden



127

Research Institutes



5 Scientific Platforms

- ATMPs
- Biomarker
- Imaging & Tracing
- Small Molecules
- Vaccine, inflammation and immune monitoring



Legal status

Non-profit, ERIC legal status

Examples of key actions



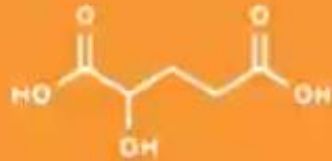
Five Scientific Platforms

eatris



ADVANCED THERAPY MEDICINAL PRODUCTS

Tissue engineering,
Gene therapy, Cell
therapy, GMP
facilities, vector
design & production



BIOMARKERS

Biobank facilities,
Multiplexed
immunostaining,
Deep genome
sequencing



IMAGING AND TRACING

(pre-clinical) PET
imaging, GMP
tracer development
and production,
(Ultra) high field
MRI, Optical and
hybrid imaging



SMALL MOLECULES

Advanced
screening (also in
3D cultures),
Development of
xenograft and *in*
vivo models, Drug
(re-)formulation,
(Pre-)clinical
validation
nanomedicines



VACCINE, INFLAMMATION AND IMMUNE MONITORING

Antigen
characterisation,
Vaccine
formulation,
Process
development

Supporting governmental bodies



REPUBLIC OF SLOVENIA
MINISTRY OF EDUCATION,
SCIENCE AND SPORT



MINISTRY OF EDUCATION,
YOUTH AND SPORTS



Swedish
Research
Council



Instituto
de Salud
Carlos III



МИНИСТЕРСТВО
НА ОБРАЗОВАНИЕТО
И НАУКАТА



LE GOUVERNEMENT
DU GRAND-DUCHÉ DE LUXEMBOURG
Ministère de l'Enseignement supérieur
et de la Recherche



ACADEMY OF FINLAND



The Research Council
of Norway



RĪGAS STRADIŅA
UNIVERSITĀTE

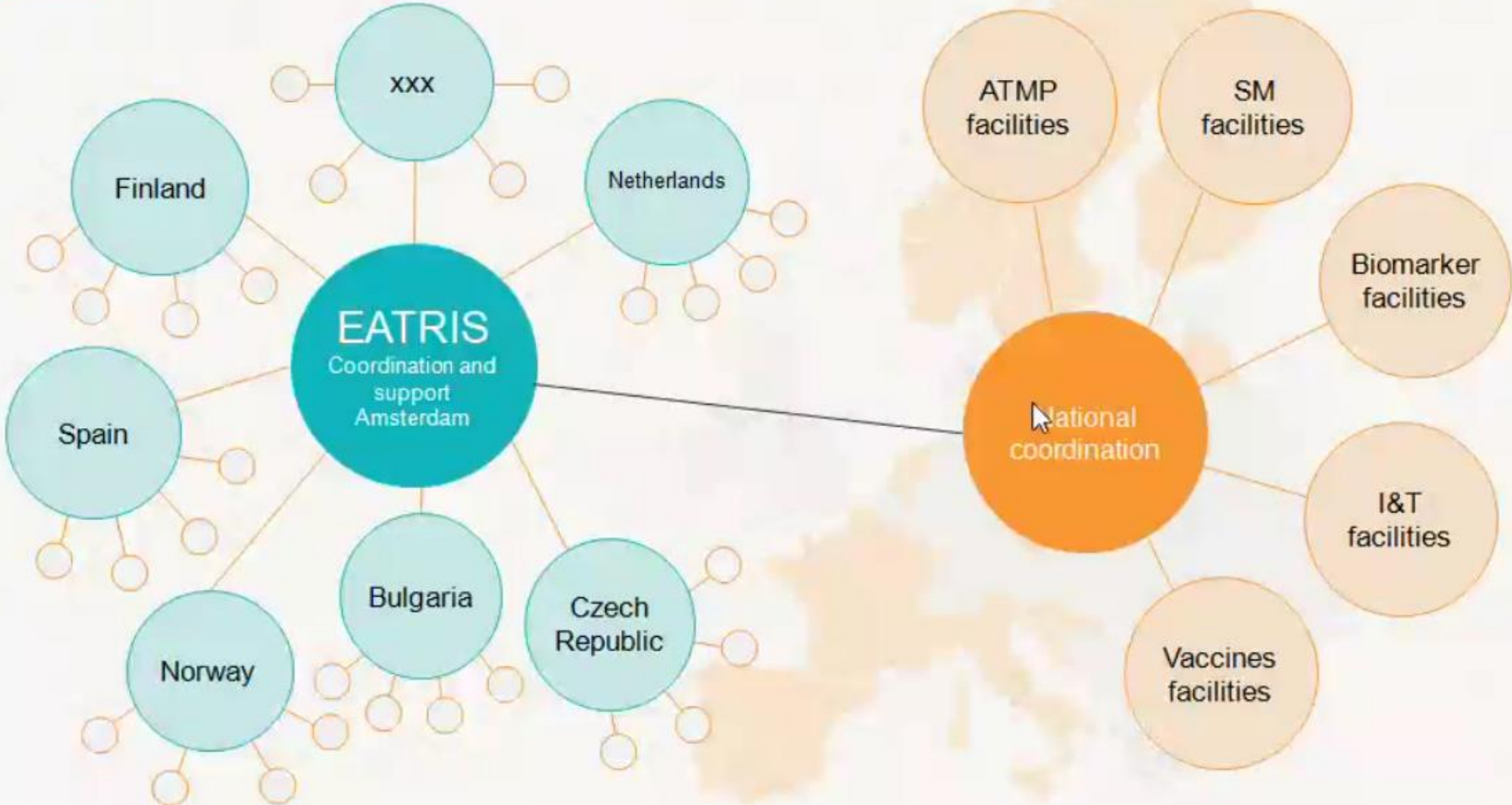


Infarmed
Autoridade Nacional do Medicamento
e Produtos de Saúde, I.P.



ZonMw

Distributed infrastructure – hub and spoke model



IIS-FJD forma parte de EATRIS desde 2008

August Pi i Sunyer Biomedical Research Institute (IDIBAPS)

Bellvitge Biomedical Research Institute (IDIBELL)

Biodonostia Health Research Institute

Biomedical Research Institute of Murcia (IMIB)

Fundación Jiménez Díaz University Hospital Health Research Institute (IIS-FJD)

Germans Trias i Pujol Research Institute (IGTP)

Health Research Institute of Santiago de Compostela (IDIS)

Health Research Institute of the Hospital Clínico San Carlos (IdISSC)

Hospital de la Santa Creu i San Pau (IR-HSCSP)

Hospital del Mar Medical Research Institute (IMIM)

Hospital La Paz Institute for Health Research (IdiPAZ)

ibs.GRANADA Instituto de Investigación Biosanitaria

INCLIVA

Institute for Health Research Aragón (IIS Aragón)

Institute of Biomedical Research of Málaga (IBIMA)

Institute of Biomedicine of Seville (IBIS)

Institute for Health Research Aragón (IIS Aragón)

Institute of Biomedical Research of Málaga (IBIMA)

Institute of Biomedicine of Seville (IBIS)

Instituto de Investigación Sanitaria Valdecilla (IDIVAL)

Lleida Biomedical Research Institute's Dr. Pifarré Foundation (IRBLleida)

Maimonides Biomedical Research Institute of Cordoba

Ramón y Cajal Health Research Institute (IRYCIS)

The Medical Research Institute of the Hospital La Fe

University Hospital La Princesa (IIS-IP)

Vall d'Hebron Institute of Research (VHIR)



The Spanish node of EATRIS is under the umbrella and coordination of the National Institute of Health Carlos III (ISCIII), as mandated official representative of Spain in EATRIS, and the Vall d'Hebron Institute of Research Institute (VHIR), Barcelona, as scientific leadership.

Spain participates with 15 translational accredited health research institutes whose added value is the creation of knowledge in the field of health research. This knowledge stems from within the most prominent Spanish hospitals which have access to first-hand clinical expertise and constitute the perfect environment for the translation of biomedical knowledge to the clinical practice and therefore to the patient (and vice-versa).

Institutes



Llamada a plataformas nacionales (EATRIS ERIC)

[Vacunas e inmunomodulación](#)

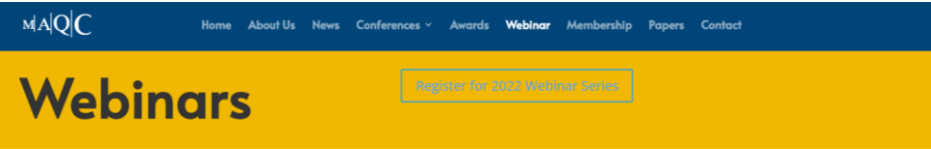
[Pequeñas moléculas](#)

[Imagen y Trazadores](#)

[Terapias Avanzadas](#)

[Biomarcadores](#)

Difusión en el IIS de actividades, convocatorias y colaboraciones de EATRIS



MAQC Society 2022 Spring Webinar Series

- Free registration for six new Webinars on current NGS scientific articles from SEQC2
- March 22 – May 3, 2022 (each Tuesday at 11am ET except for April 26)



RESEARCH • DEVELOP • COLLABORATE • COMMERCIALISE

eatris SPAIN+PORTUGAL

“Success stories on biomarkers: from bench to the clinical practice. Barriers, tips and tricks”

- 16:00h Emanuela Oldoni (EATRIS) – Welcome and introduction
- 16:05h Hugo Prazeres (I3S) – The limitless potential of Telomerase in non-invasive monitoring of urothelial carcinoma of the bladder
- 16:25h Bruno Costa (UMINHO) – New prognostic biomarkers in glioblastoma
- 16:45h Josep Quer (VHIR) – Diagnostic solutions for Hepatitis C virus (HCV) based on Next-generation sequencing (NGS)
- 17:05h Inmaculada Ibañez (IDIPAZ) – miR7-MAFG axis associated aptamer technology for the diagnosis and treatment of Non-small-cell lung carcinoma (NSCLC)
- 17:25h Round table

30 November 2021 16:00-18:00 CET

eatris+ This project has received funding from the European Union's Horizon 2020 research and innovation programme under grant agreement No 871096



De: Emanuela Oldoni <emanuelaoldoni@eatris.eu>
 Enviado el: jueves, 04 de junio de 2020 16:22
 Para: Emanuela Oldoni <emanuelaoldoni@eatris.eu>
 Asunto: [EXTERNAL]EATRIS Service Request - Blood, cells and tissue samples for use in exosome extraction and investigation of biomarkers

Dear EATRIS Platform members,

EATRIS has been approached by a Biotech who are looking for **human samples** to perform a research involving **exosome extraction** and **investigation of biomarkers**. The focus is lung fibrosis, specifically **idiopathic pulmonary fibrosis (IPF)**. If such samples cannot be obtained, they would then be interested in **chronic obstructive pulmonary disease (COPD)** or **cystic fibrosis (CF)** samples.

They are looking for **blood samples, tissue samples and cells**, with a minimum of **10 samples per group**, for the following 3 groups:

- persons aged 65 years or older who all have the same fibrotic disease (IPF if available, otherwise COPD or CF).
- healthy control group of persons of the same ages as the fibrotic disease patients.
- healthy control group of persons aged 18-35 years.

Please inform EATRIS before **June 18, 2020** by a reply to this email in case you have access to such samples and are interested to contribute to this collaboration. Alternatively, please forward to any colleague/biobank resource within your institution in case you see a specific link.

In a next step we would then check eligibility of access and sample characteristics.

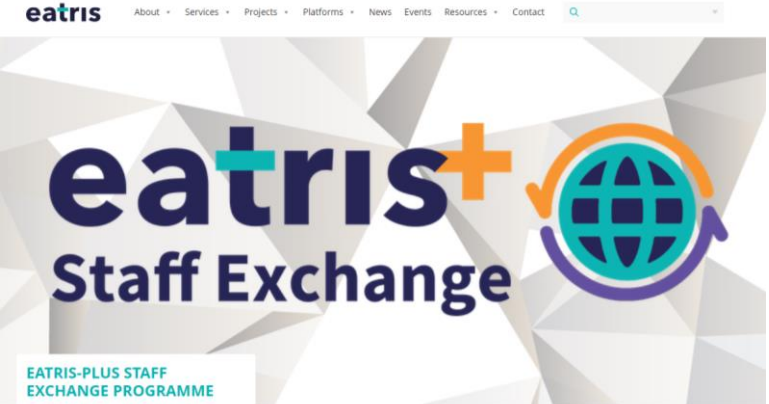
Best regards and – as always - thanks for your cooperation.

On behalf of EATRIS,

Emanuela

Emanuela Oldoni, PhD
 Scientific Project Manager

eatris



PLATFORMS

ATMP

BIOMARKERS

SMALL MOLECULES

IMAGING & TRACING

VACCINES, INFLAMMATION
AND IMMUNE MONITORING

ADVANCED THERAPY MEDICINAL PRODUCTS

SUPPORTING YOU FROM DISCOVERY TO THERAPY, MATCHING EXPERTISE, REDUCING RISK.

Advanced Therapy Medicinal Products (ATMP) represent a new category of medicines with a wide therapeutic potential for treating different types of diseases such as cancer, neurodegenerative and cardiovascular diseases. They include Gene Therapy Medicinal Products (GTMP), Cell Therapy Medicinal Products (CTMP), and Tissue Engineered Products (TEP). Clinical application of the two latter types is frequently referred to as 'Regenerative Medicine'.

SMALL MOLECULES

INNOVATIVE TRANSLATIONAL DRUG DISCOVERY & DEVELOPMENT FROM PRE-CLINICAL VALIDATION TO PROOF OF CONCEPT



Mario Salmons
May 27, 2016

The EATRIS Small Molecules platform supports the pre-clinical and clinical development of drug candidates, utilising academic expertise around novel targets and molecular scaffolds. The platform offers 28 expert translational medicine institutions and has access to advanced screening facilities with innovative cell-based assays as well as integrated use of the latest biomarker techniques.

VACCINES, INFLAMMATION AND IMMUNE MONITORING

INFRASTRUCTURE AND EXPERTISE BRIDGING THE TRANSLATIONAL GAP AND FOSTERING INNOVATION AND COLLABORATION BETWEEN ACADEMIA AND INDUSTRY

The EATRIS Vaccines, Inflammation and Immune Monitoring platform covers the entire vaccine development and production pipeline ranging from late-phase pre-clinical development to clinical trials. Partnering with 15 of Europe's most advanced development centres, the Vaccines, Inflammation and Immune Monitoring platform offers proven state-of-the-art resources for all critical issues related to vaccine development.

BIOMARKERS

SUPPORTING DRUG DEVELOPMENT TO DIAGNOSTICS DEVELOPMENT

In the era of personalized medicine, biomarkers play a crucial role in diagnostic and treatment decisions. Biomarkers also represent a key strategy for innovative clinical trials (e.g. patient stratification) that will facilitate cost-effective and speedy assessment of new drugs for efficacy and marketing approval.

IMAGING & TRACING

HIGH-END INFRASTRUCTURE FOR ADVANCED TRANSLATIONAL MOLECULAR IMAGING TO SUPPORT DRUG DEVELOPMENT

The EATRIS Imaging and Tracing Platform provides a single point of entry to high-end expertise and cutting edge translational imaging facilities, defragmenting the scattered nature of technical know-how and making optimal use of resources to improve R&D output.

With over 35 institutions, the imaging and tracing platform covers the entire scope of tracer development and molecular imaging and offers multi-centre clinical trials capabilities with validated imaging-based biomarkers.

Disease-specific tracers, contrast agents and radiolabeled drugs (manufactured to GMP guidelines in certified labs) can be tested pre-clinically and clinically in combination with a full range of high-end multi-modal imaging techniques (PET/MRI, PET/CT, SPECT, ultra-high field MRI, MRS, ultrasound or optical) and advanced image analysis.



EATRIS SPAIN APPOINTS A SCIENTIFIC
COMMITTEE FOR STRATEGIC
COLLABORATIONS

- Os haremos llegar las convocatorias de colaboración, prestación de servicios y proyectos remitidos desde EATRIS
- Información de reuniones, webinars y otras actividades formativas en las que EATRIS participa
- Os animamos a participar a nivel nacional en las Plataformas de EATRIS-España como investigadores colaboradores